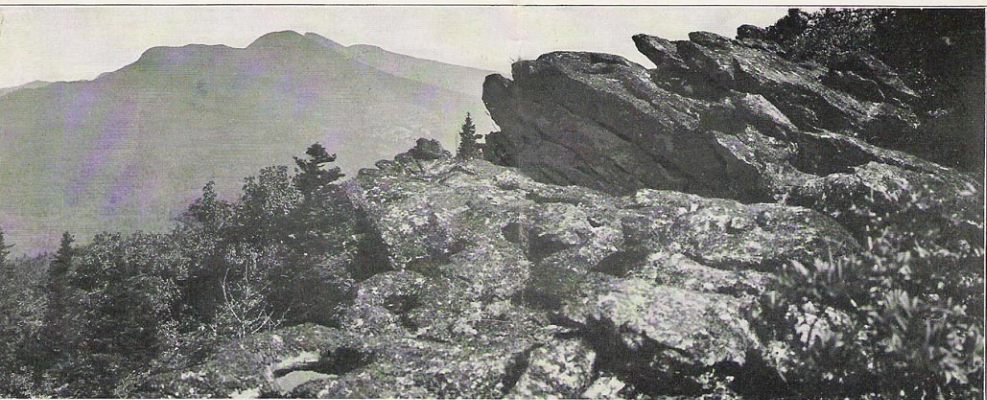


AND THE LINVILLE RIVER RAILWAY



from Grandmother Mountain, near the Eseeola Inn

the Atlantic Ocean), is a high plateau, whose altitude varies from 3,500 to 4,000 feet above the sea. From this tableland rise many of the tallest and most interesting mountain peaks of the Appalachian System.

The summer climate of the plateau is delightfully cool and invigorating, light frosts sometimes occurring even in July and August. The maximum temperature rarely exceeds 80 degrees and all kinds of athletic sports may be engaged in even at noon of a midsummer day.

The points of greatest natural interest in this region are the falls and canon of Linville River, Grandfather and Grandmother Mountains, Bynum's View, Hawksbill and Tablerock Mountains, Jonas' Bald Ground, Blowing Rock, Boone, Valle Crucis, Newland (the county seat of Avery) Banners Elk, Elk Falls, Elk Park and Cranberry, with its celebrated magnetic iron mines. The Yonahlossee Road, one of the most beautiful scenic highways in the world, leads from Linville and Pineola along the upper slopes of the mountains and over crests of the intervening ridges to Blowing Rock, N. C., affording the traveler at every turn magnificent views of this wonderful mountain region.

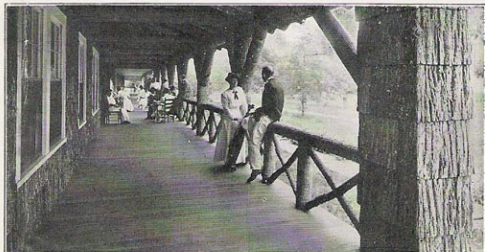
THE ESEECOLA INN AND SUMMER COLONY, Linville, N. C.

It is doubtful if any resort in all the world has a more enthusiastic patronage than that which makes its annual pilgrimage to the attractive village of Linville, in the shadow of Grandfather Mountain. Indescribably beautiful in its natural setting, blessed with a summer climate that knows

no superior, with improvements and facilities for sport and pleasure that vie with the best, Linville is the mecca of a cultured patronage whose membership is representative of all sections of America.

The Eseeola Inn and its artistic Annex afford the comforts and conveniences of a modern hotel with an elegant cuisine and well furnished rooms (en suite and single) with private baths. The Henley is the principal boarding-house. The village contains many pretty cottages and bungalows, some of which may be rented for independent housekeeping or for occupancy by those who prefer to take their meals at the Inn.

Surrounding the hotel and stretching nearly a mile up the Linville Valley are the Tanglewood and Eseeola links,



On the Veranda, Eseeola Inn, Linville, N. C.