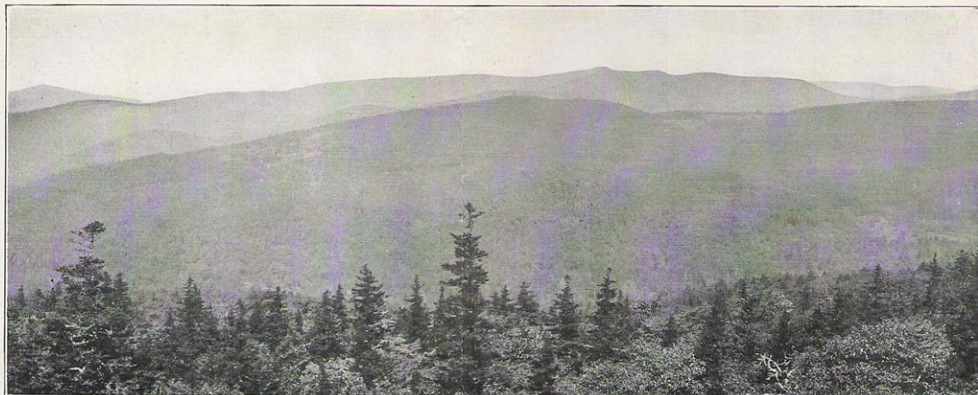


# EAST TENNESSEE & WESTERN NORTH CAROLINA R.R.



View of Grandfather Mountain (Elevation 5,964 ft.) from

## ROAN MOUNTAIN INN Roan Mountain, Tenn.

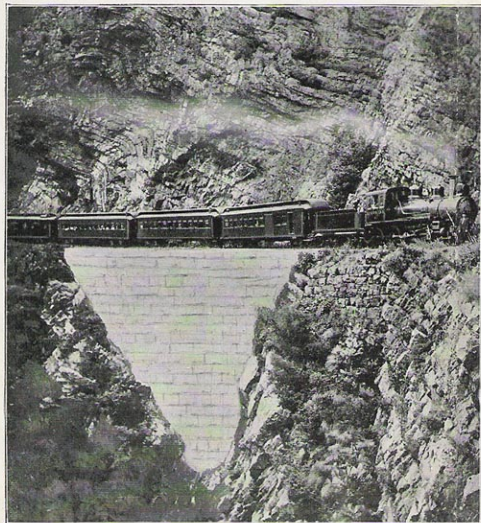
At the foot of Roan Mountain, overlooking the railway station and the picturesque Doe River, the Roan Mountain Inn is the key to one of the most attractive sections of the entire Appalachian System. Fishing, hunting and mountain climbing are the chief diversions, and Roan Mountain, elevation 6,313 feet, is the point of greatest scenic interest.

## ELK PARK AND BANNERS ELK

Elk Park, N. C., near the Tennessee State line, is the present railway station for Banners Elk. Both are popular resorts of the Beech Mountain section and are connected by a good mountain road traversing a country of unsurpassed natural beauty. At Banners Elk, eight miles from Elk Park, the Klonteska Inn, Lowe's Hotel and numerous boarding-houses share the patronage of a host of enthusiastic visitors who are attracted each season by the delightful climate, excellent fishing and magnificent scenery of the Beech Mountain country. Elk Park formerly served as a railway station for Valle Crucis, but the extension of the lines to Shulls Mills, N. C., makes the latter point the most convenient station for Valle Crucis.

## THE LINVILLE-PINEOLA PLATEAU

In the higher altitudes of the Blue Ridge Mountains, at the head waters of the Watauga and Linville Rivers (the former flowing into the Gulf of Mexico and the latter into



Roadbed Chiseled from the Rocky Cliff