

Linville Falls, near Pineola and Linville, N. C.

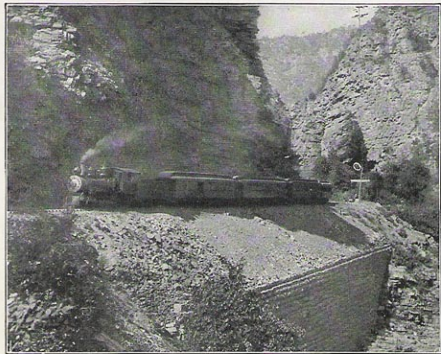
Point. We have heard of the magnificence and wildness of the scenery on this section of the road, where the mad waters of the Doe have eroded their path through the rock-ribbed mountains, forming a canon whose precipitous walls seem to touch the blue sky above. Our pathway, chiseled from the solid rock, looks down upon the torrent below and turning our eyes to the dizzy cliffs above we exclaim in wonder and admiration, "Can it really be true that such scenery as this exists in Eastern America!"

As the lips of the canon recede we are in the Gorge of the Doe. Through tunnels, over bridges, skirting the mountain sides we continue our climb, past Roan Mountain, Elk Park and Cranberry to Montezuma, N. C., the highest railway station east of the Rockies, and on to Linville and Pineola. At an elevation of about 3,800 feet above the level of the sea we have reached the Linville-Pineola Plateau, famous for its altitude and matchless climate, its beautiful scenery, popular inns and summer colonies.

## EXTENSION TO LINVILLE, SHULLS MILLS AND BOONE

During the year 1916 the Linville River Railway extended its line from Montezuma to Linville and Shulls Mills, N. C., and in 1918 to Boone, N. C., giving an all-rail route with Parlor Car service from Johnson City, to these well known but hitherto off-line points, and bringing Blowing Rock, Valle Crucis and other places of interest in Watauga County within convenient driving distance.

This extension, which crosses the "divide" at Linville Gap at an elevation of 4,100 feet above the sea, and half-encircles the Grandfather Mountain, affords one of the most



The Canon of the Doe, Pardee Point, Tenn.