

AND THE LINVILLE RIVER RAILWAY

transporting same by wagon over pike roads for distances exceeding forty miles to the nearest station, thence by rail to destination.

Boone is the gateway to this favored section, a system of highways radiating in all directions. Many notable mountain peaks and other points of natural interest are easily accessible. Blowing Rock is eight miles distant; Valle Crucis five miles.

HOMES AND SCHOOLS

The social, intellectual and moral characteristics of the people who have made their homes in this beautiful mountain region are strikingly illustrated by their splendid schools and by the remarkable agricultural, horticultural and industrial development of the section as a whole. The Lees-McRae Institute for Girls, located at Banners Elk, N. C., its Department for Boys at Plumptree, N. C.; the Valle Crucis Training School at Valle Crucis, N. C.; and the Appalachian Training School at Boone, N. C., are admirably equipped and liberally patronized institutions.

If you are looking for an ideal location for a permanent or for a summer home, among the congenial and intelligent people, in a country of surpassing beauty and attractiveness, where health and comfort are equal to the best, you would do well to investigate the attractions of the many progressive communities along and adjacent to the lines of the East Tennessee & Western North Carolina Railroad and the Linville River Railway.



The Celebrated "Blowing Rock" at Blowing Rock, N. C., Reached Via Linville River Railway

INFORMATION

Parties desiring further information are requested to address Passenger Department, E. T. & W. N. C. R. R. Co., Johnson City, Tenn.

Officers of the East Tennessee & Western North Carolina Railroad Company

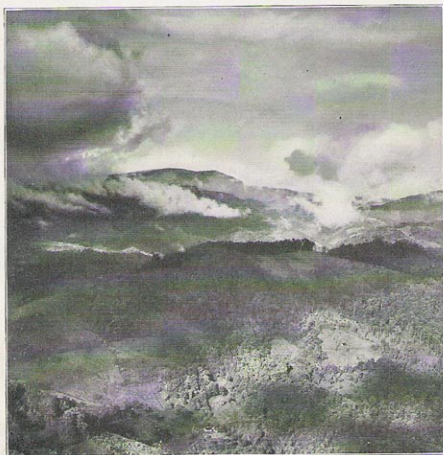
F. P. Howe	- - - - -	President
Geo. W. Hardin	- - - - -	Vice-President
A. H. Fisher	- - - - -	Secretary
J. E. Vance	- - - - -	Treasurer

Johnson City, Tenn.

Officers of the Linville River Railway Company

Edgar P. Earle	- - - - -	President
Ario Pardee	- - - - -	Vice-President
A. H. Fisher	- - - - -	Secretary
J. E. Vance	- - - - -	Treasurer

Johnson City, Tenn.



Roan Mountain, near Roan Mountain Hotel