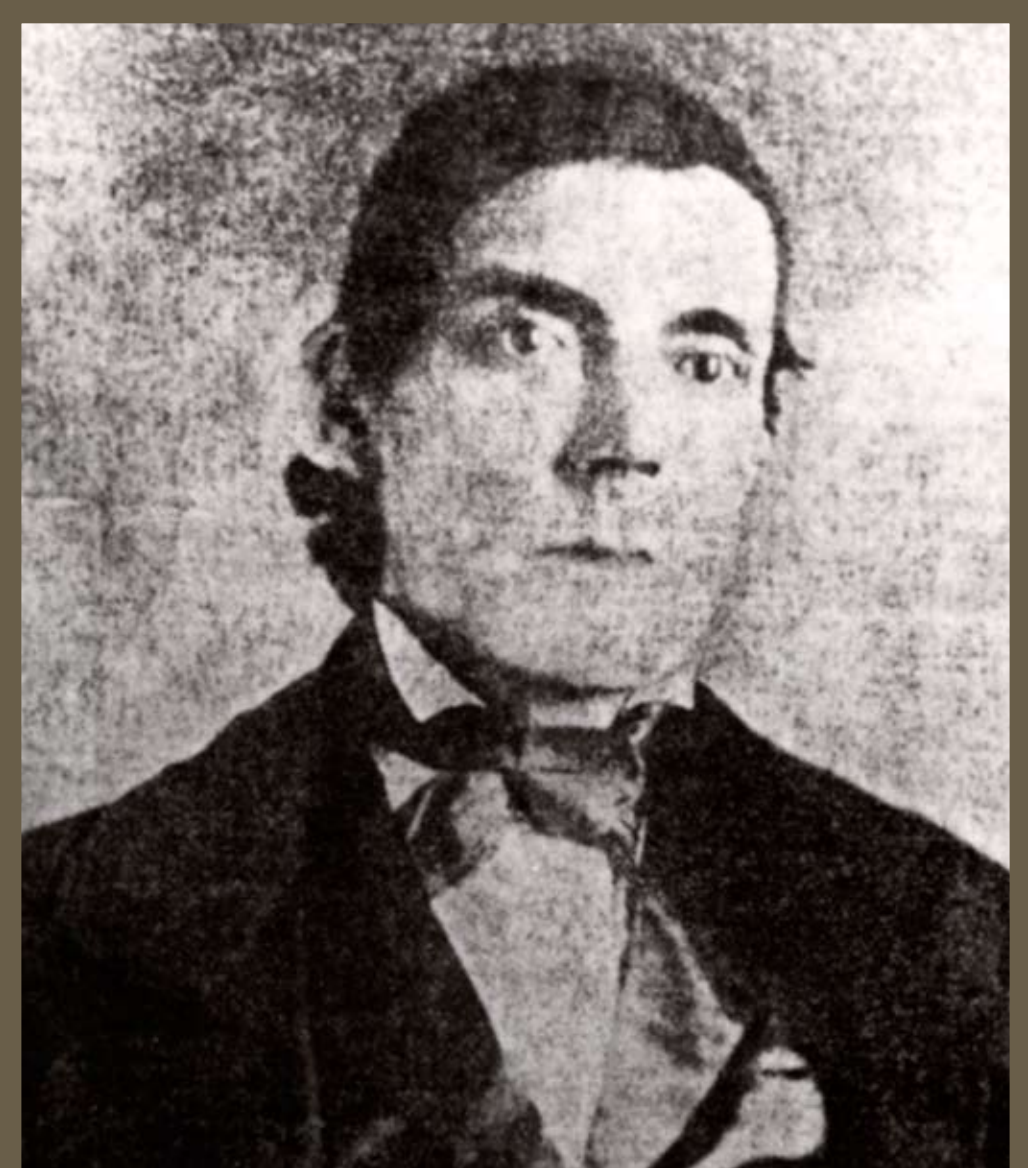
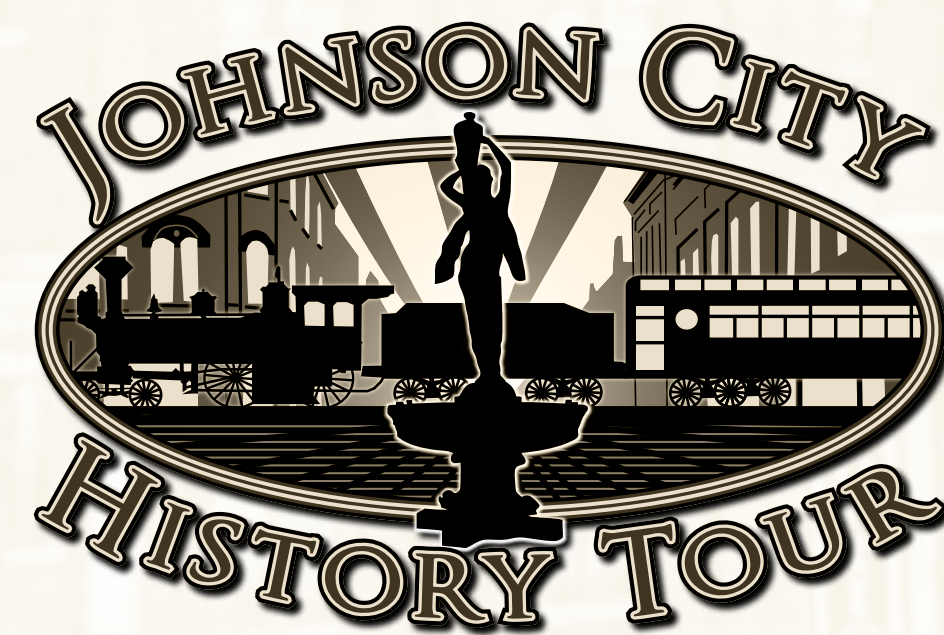


Courtesy of Alan Bridwell



Henry Johnson (ca. 1856), a man of vision and Johnson City's founder.



# JOHNSON'S DEPOT

A side view of the two buildings of Johnson's Depot during the mid-1880s.



Johnson's Depot accommodated travelers on Old Stage Road (Market Street).



The East Tennessee, Virginia, & Georgia Depot replaced Johnson's Depot by 1886. The ETV&G became the Southern Railway in 1894.

On May 31, 1854, Henry Johnson (1809 – 1874) bought from Abraham Jobe, one-half acre of land located at the corner of the stage road and the recently graded right-of-way of the East Tennessee & Virginia Railroad. Johnson, at his own expense, built a small depot at this junction and waited for the first train to arrive in the summer of 1857.

Johnson's Depot would also serve as post office, store, hotel, and home over the years. Johnson's settlement grew to

about 500 people by 1870. After its incorporation in 1869, Henry Johnson was unanimously elected as Johnson City's first mayor.

The town became a strategic rail junction for the southeastern United States. Three rail lines – the Southern, the Carolina, Clinchfield & Ohio Railway, and the East Tennessee & Western North Carolina – all met near the site of Johnson's original depot in downtown Johnson City.

