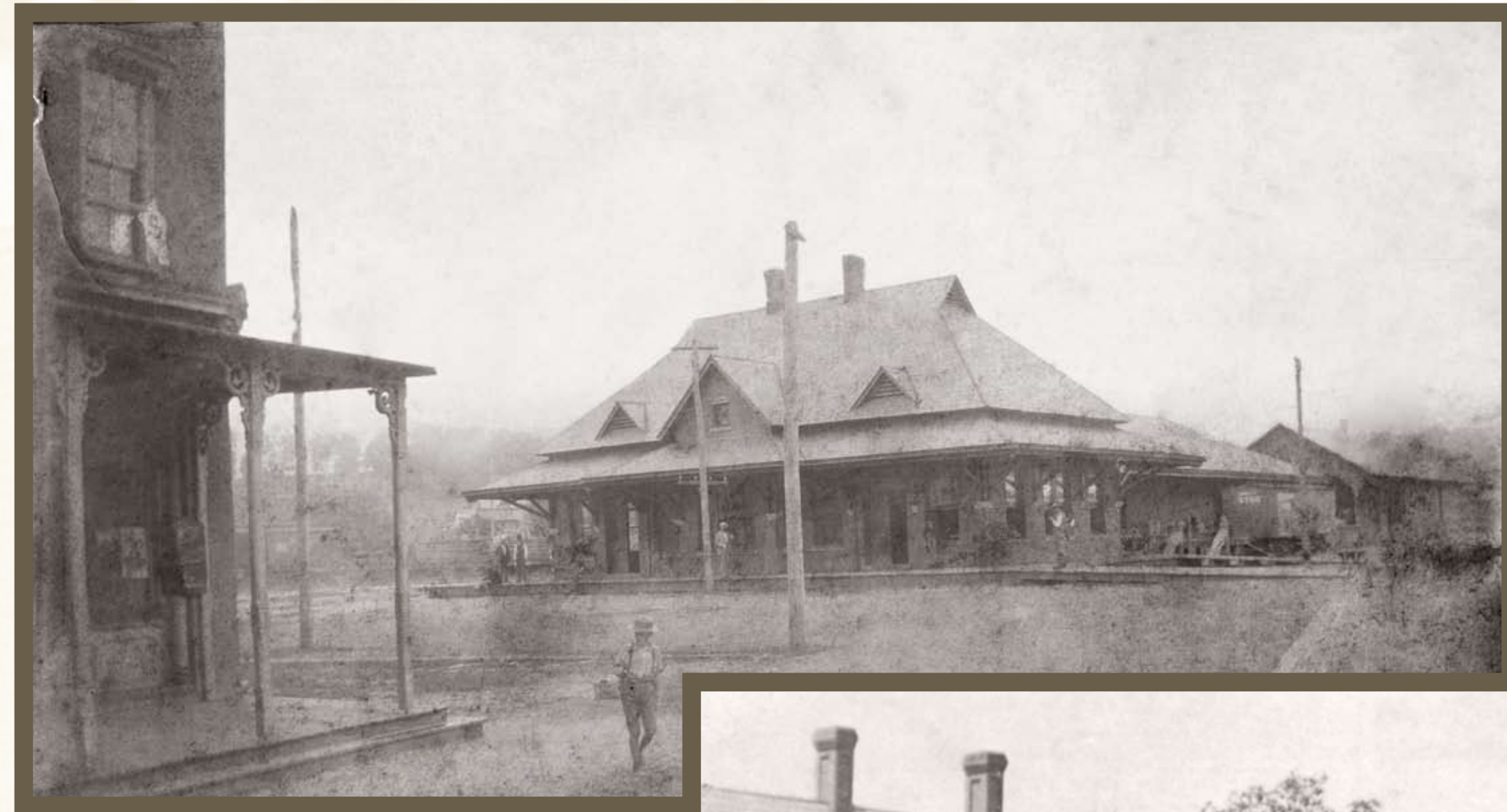


THE ET&WNC DEPOT



Two views of the ET&WNC Depot during the 1890s.



The Cranberry Furnace Company (1898 – 1929), located on East Fairview Street, produced 110 to 125 tons of pig iron daily from the ore extracted from the company's Cranberry mines.



The employees of Harris Manufacturing Company (1898 – 1982) pictured in front of the plant on East Walnut Street in 1902. The company turned North Carolina timber into flooring.

This depot was built in 1891 to serve two railroads: the East Tennessee & Western North Carolina (ET&WNC) and the East Tennessee, Virginia, & Georgia (ETV&G). The narrow gauge tracks of the ET&WNC Railroad were on the south side of the depot, and the ETV&G tracks were on the north side.

The ET&WNC, known locally as the “Tweetsie”, ran east into North Carolina. Originally built to bring iron ore from the mines at Cranberry, North Carolina, the ET&WNC was extended later to form a 66-mile railway between Johnson City and Boone, North Carolina.

The Tweetsie also brought great quantities of hardwood timber out of the mountains – building a significant flooring industry in Johnson City – and opened Roan Mountain and the North Carolina High Country to tourism. Passenger service from Johnson City on the ET&WNC ended in 1940.